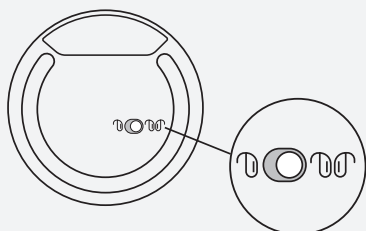
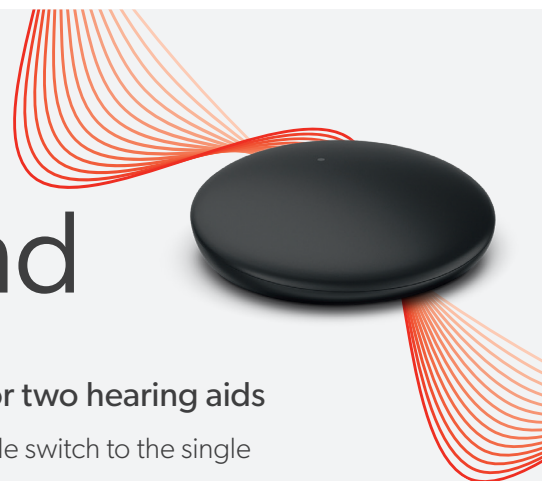


Signia Quick Start Guide

Connexx™ TV Sound

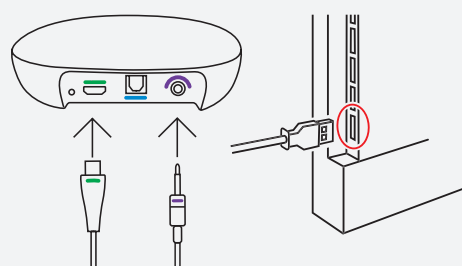


Setting up TV Sound for one or two hearing aids

1. If you have one hearing aid, toggle switch to the single hearing aid image (mono sound)
2. If you have two hearing aids, toggle switch to the two hearing aid image (stereo sound)

Powering TV Sound

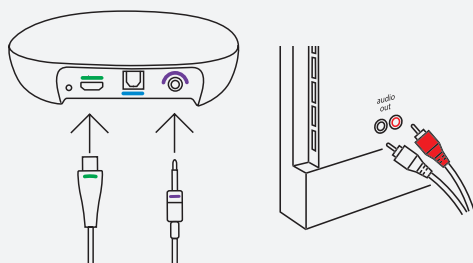
1. Connect the Micro USB cable (green) to the socket (green) on the back of the TV Sound device
2. Connect the other end of the Micro USB cable to the USB port on the back of your TV
Optional: If your TV does not have a USB port, you can use a standard USB wall plug/charger with a minimum output current of 500mA (0.5A) DC and voltage of 5V (not included)
3. Turn on your TV



Connecting the audio input

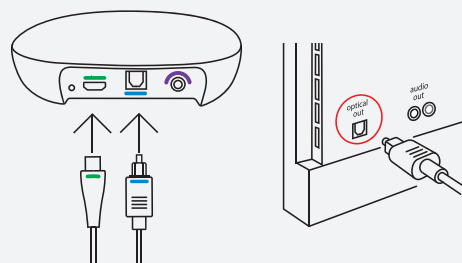
Via analog cable

1. Connect the TV Sound to the power supply (green micro-USB cable)
2. Connect the analog cable to the back of the TV Sound (purple inlet)
3. Connect the other end of the analog cable into the corresponding sockets on the TV
4. Turn on the TV to start the audio



Via optical (toslink) cable

1. Connect the TV Sound to the power supply (green micro-USB cable)
2. Connect the optical cable to the back of the TV Sound (blue inlet)
3. Connect the other end of the optical cable to the "DIGITAL AUDIO OUT (OPTICAL)" socket on the TV
4. Turn on the TV to start the audio. If the TV Sound does not indicate audio is being received, change the sound output settings on the TV to one of the optical options (refer to TV's user guide for specific steps)



signia

Signia Quick Start Guide

Connexx TV Sound



Pairing your hearing aids to TV Sound

1. If the hearing aids are paired with another Bluetooth® device (i.e. smartphone), turn off the Bluetooth on that device before pairing to the TV Sound
2. Turn on the TV Sound by plugging into a power source. If using the TV's USB port, turn the TV on
3. Restart the hearing aids (place in charger for 5 seconds and take back out, manually turn off/on, or open/close battery door)
4. Place hearing aids on top of the TV Sound (must be within 8 in or 20 cm)
5. TV Sound LED pulses blue = attempting to pair to hearing aids
6. TV Sound LED solid blue = pairing complete
7. If pairing additional hearing aids*, repeat steps 3-6

LED	STATUS	LED	STATUS
Solid green	TV Sound is on, paired, and audio input is detected	Blinking orange	The TV Sound reset button has been pressed briefly, and streaming has been stopped for 30 seconds. Press the reset button again to resume streaming or wait 30 seconds for streaming to resume automatically
Pulsating green	TV Sound is on, but no audio input is detected		
Solid blue	One or both hearing aids have been successfully paired with the TV Sound	Solid red	TV Sound is receiving an unknown sound format
Blinking blue	TV Sound has just been turned on for the first time, or the TV Sound has been reset	Blinking red	TV Sound has encountered an error
Pulsating blue	TV Sound is searching for hearing aids to pair with or attempting to establish a pairing	Pulsating red	TV Sound is overheating. Let the device cool down before use

Start streaming via onboard hearing aid controls

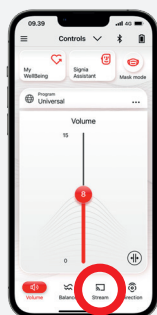
Your Hearing Care Professional can add a dedicated TV program to your hearing aids. This dedicated TV program allows you to stream from the TV Sound even if your hearing aids are not connected to the Signia app

- To activate streaming from the TV Sound, change to the TV program by the button/rocker switch on your hearing aid, use the Signia app, or via the miniPocket** remote control
- To stop streaming, switch away from the TV program (e.g. back to Universal)

Start streaming with the Signia app

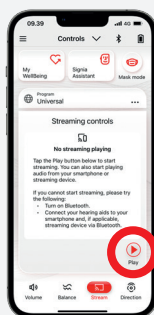
Step 1:

- Open the Signia app
- Tap Stream in the lower menu bar



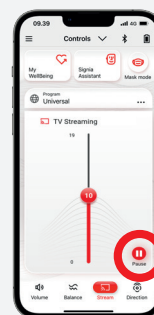
Step 2:

- Tap Play to start streaming TV audio



Step 3:

- Adjust volume if desired
- Tap Pause to stop streaming



* TV Sound can be paired to multiple hearing aids that use the same Bluetooth protocols. One TV Sound can be paired to multiple pairs of Bluetooth-enabled Signia IX/AX/X/Nx hearing aids or one TV Sound can be paired to multiple pairs of Signia Pure Charge&Go BCT IX.

**miniPocket remote control accessory can be purchased through your hearing care provider.

Signia Quick Start Guide

Connexx TV Sound

Connecting a Sound bar to the TV Sound device

1. If the optical port is being used on the TV Sound, the 3.5 mm (purple) port can be used as an optical OUT
2. Use a mini-TOSLINK to TOSLINK cable (not included)
3. Plug the mini-TOSLINK end into the 3.5mm (purple) port
4. Plug the other end into the sound bar's optical IN port



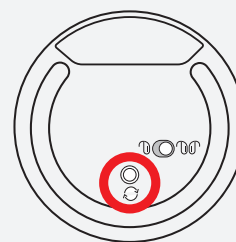
Switching between 2 TV Sound devices

1. Reboot hearing aids and place on top of the target/desired TV Sound device
2. The TV Sound device will pair to the hearing aids

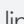
Removing a pairing

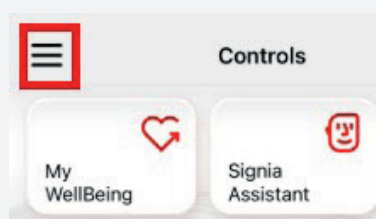
Pairing with hearing aids can be removed from the TV Sound device in two ways.

1. Remove all pairings from the TV Sound device:
 1. Make sure TV Sound is powered. Press and hold the reset button on bottom of device for 5 seconds
 2. LED on TV Sound device turns off
 3. Release the button
 4. Device resets and removes all pairings

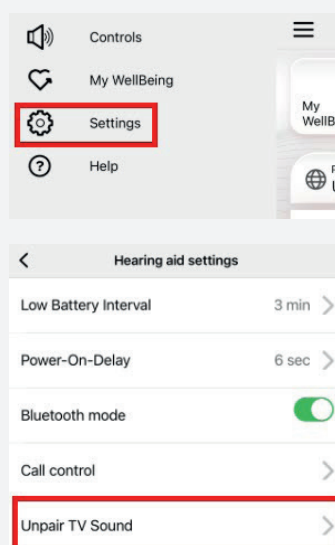


2. Remove a pairing using the Signia app:

1. In the app, tap on the three lines  in the upper left corner



2. Select **Settings** > **Hearing aid settings** > tap **Unpair TV Sound**



3. Tap on **TV Sound** shown > select **Unpair**

